

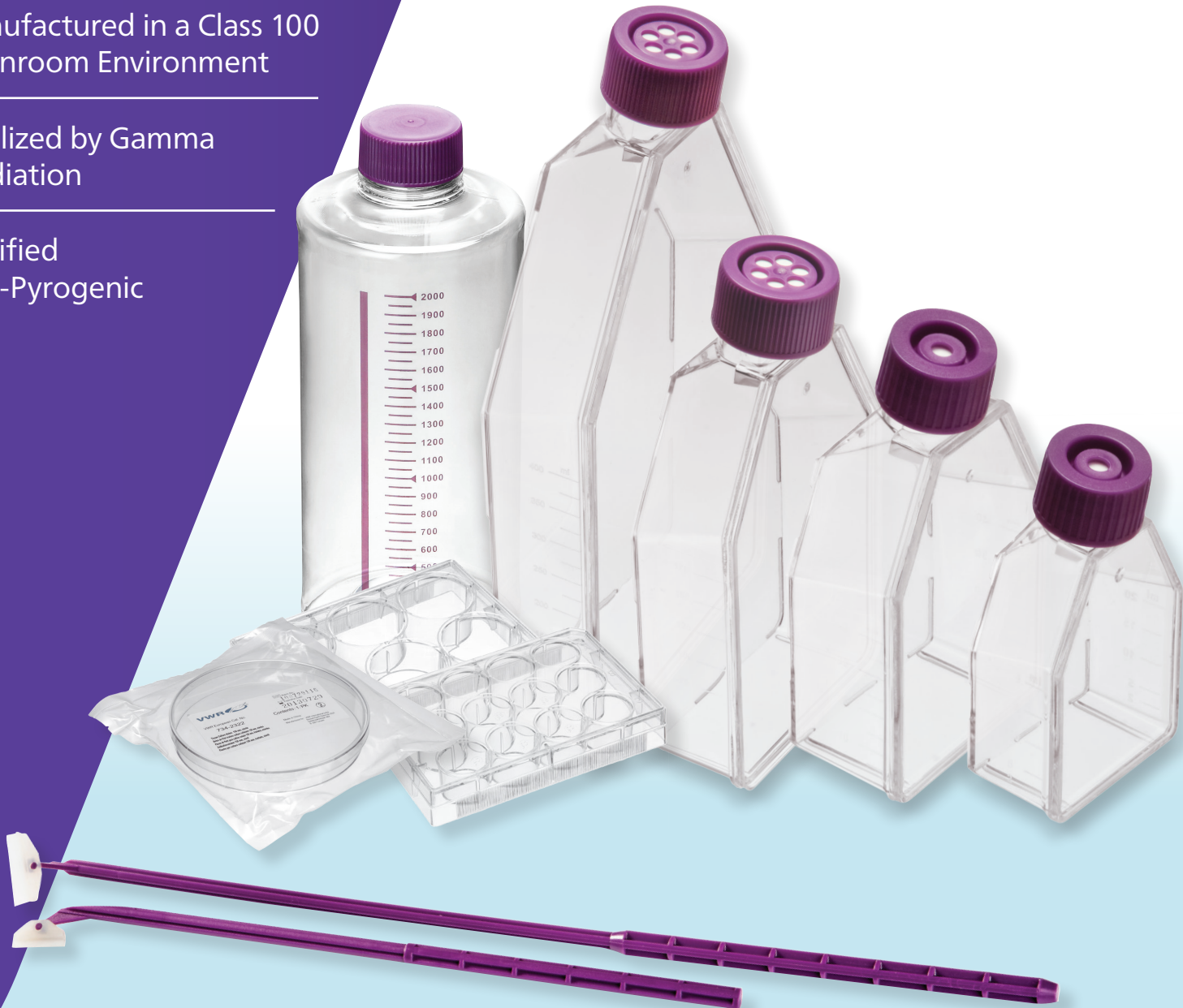
## VWR<sup>®</sup> ESSENTIAL PRODUCTS FOR TISSUE CULTURE

Three Product Lines to Fit All  
Tissue Culture Applications

Manufactured in a Class 100  
Cleanroom Environment

Sterilized by Gamma  
Irradiation

Certified  
Non-Pyrogenic



## VWR TISSUE CULTURE ESSENTIALS

The VWR Collection has three lines of Tissue Culture essentials to meet your laboratory needs.

- Products with a standard plasma cell culture treatment
- Non-treated cell culture products
- Products with a treatment for increased cell attachment

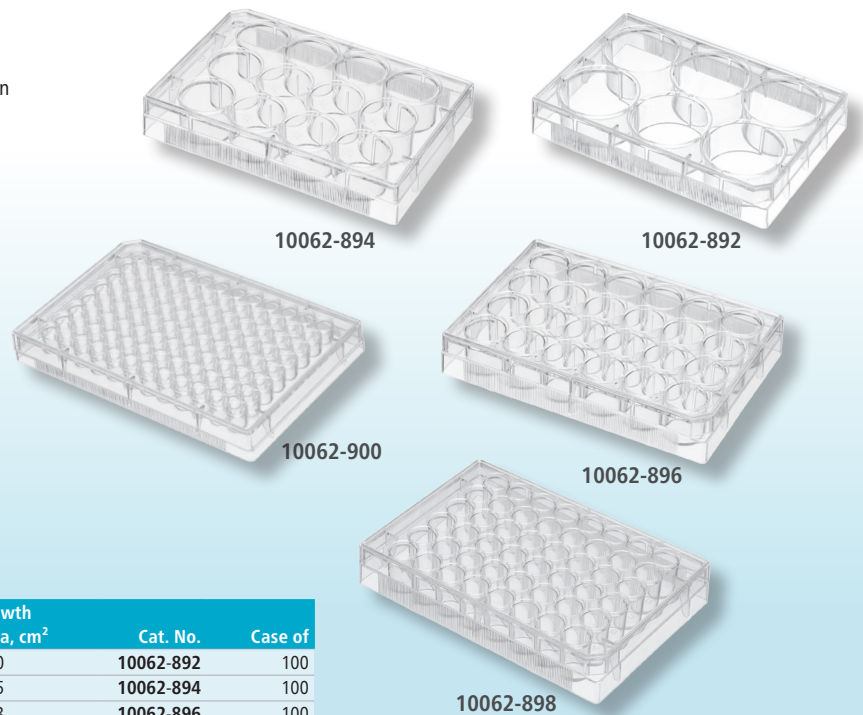
Flasks, dishes, and multi-well plates are available across all three lines.

### VWR® TISSUE CULTURE PRODUCTS, PLASMA TREATED

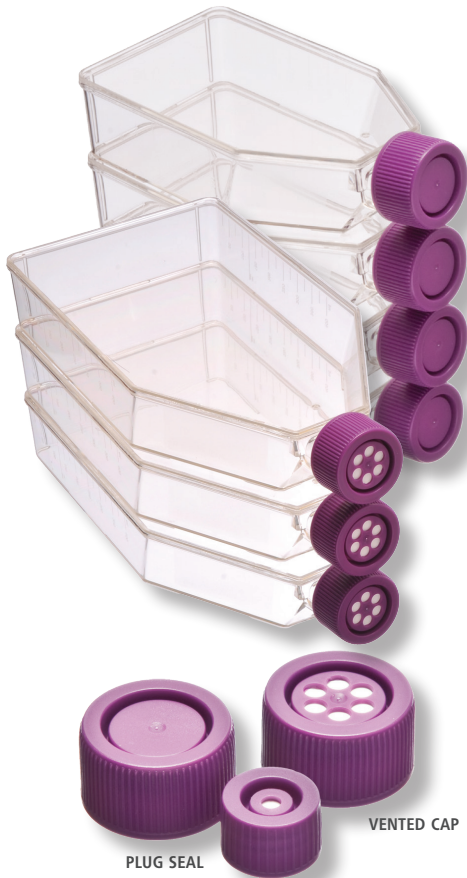
Designed for your routine tissue culture activities, VWR Plasma-Treated Tissue Culture products provide consistent performance at a great value. VWR's flasks, dishes, and plates have been plasma treated to ensure uniform cell adhesion, spreading, and growth. All tissue culture products are manufactured in a Class 100 cleanroom environment, produced with 100% USP VI crystal virgin polystyrene, sterilized by gamma irradiation to  $10^{-6}$ , and certified non-pyrogenic.

#### VWR® Multi-Well Cell Culture Plates

- Uniform well volume ensures equal growth surface area
- Raised rims on wells with uniform rings on the lid to reduce evaporation
- Single position lid reduces the risks of contamination and mishandling
- Wells with alpha-numeric code for easy identification
- Individually packed in peel-to-open paper/plastic blister pack



Number of Wells	Max. Well Volume, mL (Single Well)	Working Volume, mL (Single Well)	Growth Area, cm <sup>2</sup>	Cat. No.	Case of
6	17.00	1.90 – 2.90	9.60	10062-892	100
12	6.80	0.76 – 1.14	3.85	10062-894	100
24	3.50	0.38 – 0.57	1.93	10062-896	100
48	1.55	0.19 – 0.29	0.84	10062-898	100
96 F	0.39	0.075 – 0.20	0.33	10062-900	100
96 U	0.32	0.32	0.32	10062-902	100



### VWR® Cell Culture Flasks

VWR flasks are perfect for cell growth and cell yields.

**Vented caps** incorporate a 0.22µm hydrophobic filter to allow gas exchange and minimize risk of contamination.

**Plug seal caps** can be used in closed systems (providing a liquid and gas sheer seal) or used in open systems (simply unscrew the cap one-quarter of a turn).

- Innovative angled neck design offers good pipet and cell scraper access
- Upper triangular and wider base shape provides better stability
- Volume graduations on both sides with special writing area
- Packed in zip resealable self-standing bags so the flasks remain upright and the risk of contamination is reduced
- Every inner bag is printed with batch number for traceability
- Available with two different HDPE caps used in both open and closed systems

Capacity, mL	Growth Area, cm <sup>2</sup>	Cap Type	Cat. No.	Case of
25	12.5	Vented	10062-868	200
25	12.5	Plug-seal	10062-870	200
50	25.0	Vented	10062-872	200
50	25.0	Plug-seal	10062-874	200
250	75.0	Vented	10062-860	100
250	75.0	Plug-seal	10062-862	100
600	182.5	Vented	10062-864	40
600	182.5	Plug-seal	10062-866	40
850	300.0	Vented	10062-884	18
850	300.0	Plug-seal	10062-886	18

### VWR® Tissue Culture Dishes

- Flat bottom, uniform wall thickness ensure distortion-free bottom
- Stacking rings for easier stacking and handling
- 60, 70, and 100 mm dishes are designed with gripping ring
- Packed in zip resealable self-standing bags so that the dishes remain upright and the risk of contamination is reduced
- Every inner bag is printed with batch number for traceability



Dia., cm	Growth Area, cm <sup>2</sup>	Cat. No.	Case of
3.5	8.5	10062-888	960
6	21.2	10062-890	600
7	36.3	10062-876	600
9	55.0	10062-878	500
10	60.8	10062-880	300
15	143.0	10062-882	120



## VWR® Tissue Culture Plate Inserts

Clear, sterile, general polystyrene (GPPS) with polycarbonate (PC) or polyester (PET) membrane are treated for optimal cell attachment. The plate inserts are sterile and assembled with 6-, 12-, or 24-well plates and resist most fixing and staining agents.

They are manufactured in a class 100,000 cleanroom environment under EN ISO13485:2003 and ISO9001:2008 quality management system.

Temperature range: -20°C to +50°C

- Non-pyrogenic
- Sterilized by gamma irradiation SAL 10<sup>6</sup> (ISO11137)
- Shelf life: 3 years after month of production
- Non-autoclavable

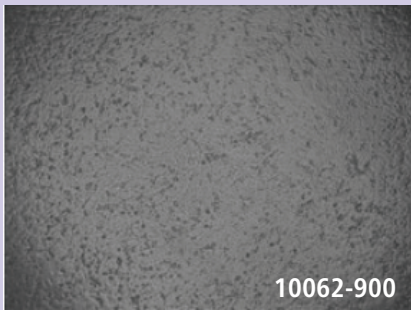
Membrane Dia., mm	Membrane Type	Pore Size, µm	Growth Area, cm <sup>2</sup>	Cat. No.	Inserts/Plate	Plates/Case
<b>6-Well Plates</b>						
24	PET	0.1	4.78	<b>10769-182</b>	6	24
24	PET	0.4	4.78	<b>10769-192</b>	6	24
24	PET	1.0	4.78	<b>10769-184</b>	6	24
24	PET	3.0	4.78	<b>10769-194</b>	6	24
24	PET	8.0	4.78	<b>10769-196</b>	6	24
24	PC	0.1	4.78	<b>10769-176</b>	6	24
24	PC	0.4	4.78	<b>10769-186</b>	6	24
24	PC	1.0	4.78	<b>10769-178</b>	6	24
24	PC	3.0	4.78	<b>10769-188</b>	6	24
24	PC	8.0	4.78	<b>10769-190</b>	6	24
24 mm	PC	12.0	4.78	<b>10769-180</b>	6	24
<b>12-Well Plates</b>						
12	PET	0.1	1.12	<b>10769-204</b>	12	48
12	PET	0.4	1.12	<b>10769-214</b>	12	48
12	PET	1.0	1.12	<b>10769-206</b>	12	48
12	PET	3.0	1.12	<b>10769-216</b>	12	48
12	PET	8.0	1.12	<b>10769-218</b>	12	48
12	PC	0.1	1.12	<b>10769-198</b>	12	48
12	PC	0.4	1.12	<b>10769-208</b>	12	48
12	PC	1.0	1.12	<b>10769-200</b>	12	48
12	PC	3.0	1.12	<b>10769-210</b>	12	48
12	PC	8.0	1.12	<b>10769-212</b>	12	48
12	PC	12.0	1.12	<b>10769-202</b>	12	48
<b>24-Well Plates</b>						
6.5	PET	0.1	0.33	<b>10769-226</b>	12	48
6.5	PET	0.4	0.33	<b>10769-238</b>	12	48
6.5	PET	1.0	0.33	<b>10769-228</b>	12	48
6.5	PET	3.0	0.33	<b>10769-240</b>	12	48
6.5	PET	8.0	0.33	<b>10769-242</b>	12	48
6.5	PC	0.1	0.33	<b>10769-220</b>	12	48
6.5	PC	0.4	0.33	<b>10769-230</b>	12	48
6.5	PC	1.0	0.33	<b>10769-222</b>	12	48
6.5	PC	3.0	0.33	<b>10769-232</b>	12	48
6.5	PC	5.0	0.33	<b>10769-236</b>	12	48
6.5	PC	8.0	0.33	<b>10769-234</b>	12	48
6.5	PC	12.0	0.33	<b>10769-224</b>	12	48

## VWR® TISSUE CULTURE PRODUCTS FOR INCREASED CELL ATTACHMENT

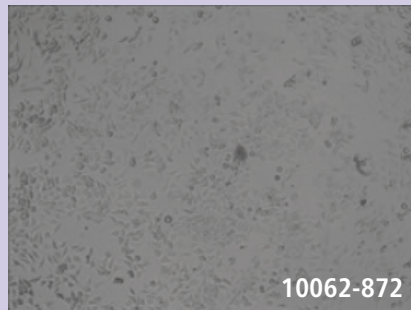
The VWR Tissue Culture Products for Increased Cell Attachment line can improve cell spreading and attachment. These products are suitable for the cells that may adhere poorly due to cell phenotype, stressful culture conditions, or those which normally require additional biological coatings for attachment. This special surface treatment will increase the hydrophilic level of the surface to reach a water drop contact angle at less than 10 degrees. The increased hydrophilic surface will allow a wider range of cells to be easily attached to the surface of our culture products, especially sensitive cells such as neuronal cells and primary cell lines.

All Tissue Culture products are manufactured in a Class 100 cleanroom environment, produced with 100% USP VI crystal virgin polystyrene, sterilized by gamma irradiation to  $10^{-6}$  and certified non-pyrogenic. Treated products have a plasma treatment that ensures consistent cell attachment, spreading, and growth. Our collection provides a great value for your tissue culture work, allowing you to maximize your budget.

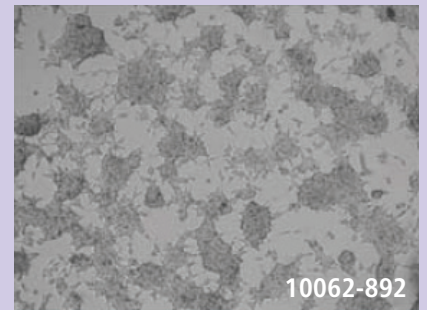
### Side-by-Side Testing of VWR Plasma Treated Vs. VWR Increased Cell Attachment Products



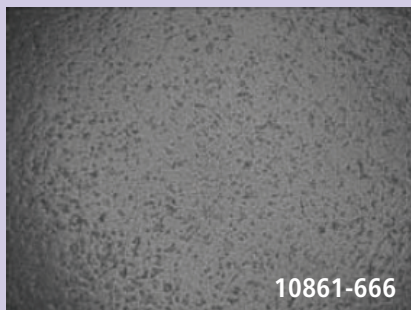
3T3 96-Well Plate - VWR, Normal



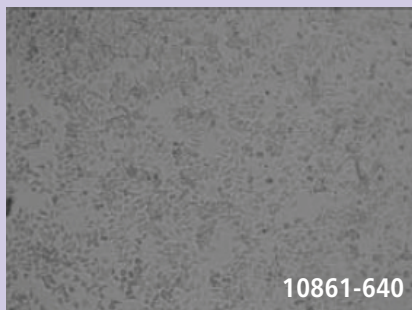
LNCaP-A 50 ml Flask - VWR, Normal



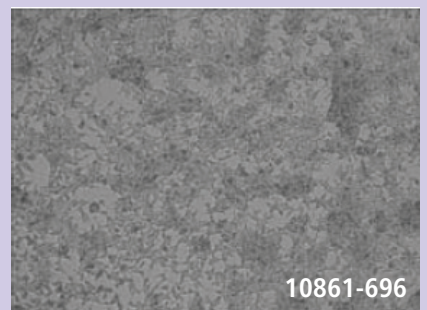
293T 6-Well Plate - VWR, Normal



3T3 96-Well Plate - VWR, Cell-Attach, Sprayed, After Aging Test



LNCaP-A 50 ml Flask - VWR, Cell-Attach, Sprayed, After Aging Test



293T 6-Well Plate - VWR, Cell-Attach, Sprayed, After Aging Test

## VWR® Cell Culture Plates Treated for Increased Cell Attachment

- Available with six different growth surface areas
- Uniform well volume ensures an equal growth surface area
- Flat well bottom and round bottom plates available
- Well surface is smooth and free from striation to maximize usable growth area
- Raised rims on wells with uniform rings on the lid to reduce evaporation
- Single position lid reduces the risk of cross-contamination and handling mistakes
- Wells are labeled with alphanumeric code for easy identification
- Suitable for all common instruments and automation



Number of Wells	Max. Well Volume, mL (Single Well)	Working Volume, mL (Single Well)	Growth Area, cm <sup>2</sup>	Cat. No.	Case of
6	17.00	1.90 – 2.90	9.60	<b>10861-696</b>	100
12	6.80	0.76 – 1.14	3.85	<b>10861-698</b>	100
24	3.50	0.38 – 0.57	1.93	<b>10861-700</b>	100
48	1.55	0.19 – 0.29	0.84	<b>10861-702</b>	100
96 F	0.39	0.075 – 0.20	0.33	<b>10861-666</b>	100
96 U	0.32	0.32	0.32	<b>10861-668</b>	100

## VWR® Cell Culture Dishes for Increased Cell Attachment

- Available with six different diameters
- Flat bottom, uniform wall thickness ensures distortion-free bottom
- Rim on the bottom side of the lid mates with the dish brim for easy and secure stacking
- Numeric scale divides dish into quadrants for easy orientation

Dia., cm	Growth Area, cm <sup>2</sup>	Cat. No.	Case of
3.5	8.5	<b>10861-656</b>	240
6	21.2	<b>10861-658</b>	240
7	36.3	<b>10861-660</b>	240
9	55	<b>10861-662</b>	240
10	60.8	<b>10861-680</b>	240
15	143	<b>10861-682</b>	80



## VWR® Cell Culture Flasks for Increased Cell Attachment

- Available with five different growth areas
- Flask surface is flat and free from striation to maximize usable growth area
- Two different cap styles can be used in both open and closed systems
- Innovative angled neck design offers good pipet and cell scraper access
- Triangular top with wide base provides stability
- Protruding ridge on the back side of the flask enables easy stacking
- Special area near the neck for easy marking/writing
- Engraved graduations on multiple sides
- Strict integrity tested

Capacity, mL	Growth Area, cm <sup>2</sup>	Cap Type	Cat. No.	Case of
25	12.5	Vented	<b>10861-670</b>	200
25	12.5	Plug-seal	<b>10861-672</b>	200
50	25.0	Vented	<b>10861-640</b>	200
50	25.0	Plug-seal	<b>10861-642</b>	200
250	75.0	Vented	<b>10861-644</b>	100
250	75.0	Plug-seal	<b>10861-646</b>	100
600	182.5	Vented	<b>10861-648</b>	40
600	182.5	Plug-seal	<b>10861-650</b>	40
850	300.0	Vented	<b>10861-652</b>	18
850	300	Plug-seal	<b>10861-654</b>	18

## VWR® TISSUE CULTURE PRODUCTS, NON-TREATED

VWR's Non-Treated Tissue Culture Products have been designed for use in cell suspension applications where cell attachment is not desired. The crystal clear non-treated hydrophobic surface will minimize the attachment for suspension cells and maximize their overall viability. All non-treated plates, dishes, and flasks are sterilized by gamma irradiation and are non-pyrogenic.

### VWR® Tissue Culture Plates, Non-Treated

- Available with eight different growth surface areas
- Uniform well volume
- Flat well bottom and round bottom plates available
- Well surface is smooth and free from striation
- Alphanumerically coded for easy identification
- Suitable for all common instruments and automation

No. of Wells	Max. Well Volume, mL (Single Well)	Working Volume, mL (Single Well)	Growth Area, cm <sup>2</sup>	Cat. No.	Case of
1	73	10–40	97	75780-348	100
4	1.813	1	1.96	10813-630	100
6	17	0.76–1.14	3.85	10861-554	100
12	6.8	0.38–0.57	1.93	10861-556	100
24	3.5	0.19–0.29	0.84	10861-558	100
48	1.55	0.075–0.20	0.33	10861-560	100
96 F	0.39	0.075–0.20	0.32	10861-562	100
96 U	0.32	1.90–2.90	9.6	10861-564	100
384	0.127	0.01–0.1	0.1135	10814-224	100

### VWR® Tissue Culture Dishes, Non-Treated

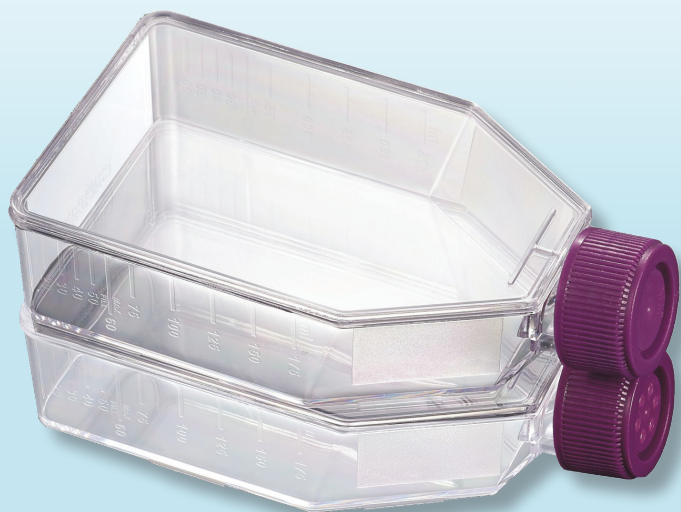
- Available with six different diameters
- Dish surface is smooth and free from striation
- Easy and secure stacking

Dia., cm	Growth Area, cm <sup>2</sup>	Cat. No.	Case of
3.5	8.5	10861-586	960
6	21.2	10861-588	600
7	36.3	10861-590	600
9	55	10861-592	500
10	60.8	10861-594	300
15	143	10861-596	120

### VWR® Tissue Culture Flasks, Non-Treated

- Available with five different volume ranges
- Flask surface is flat and free from striation to maximize usable growth area
- Two different cap styles can be used in both open and closed systems
- Innovative angled neck design offers good pipet and cell scraper access
- Triangular top with wide base provides stability
- Protruding ridge on the back side of the flask facilitates stacking
- Special area near the neck for easy marking/writing
- Engraved graduations on multiple sides
- Strict integrity tested

Capacity, mL	Working Volume, mL	Cap Type	Cat. No.	Case of
25	20	Plug Seal	10861-566	200
25	20	Vent	10861-568	200
50	40	Plug Seal	10861-570	200
50	40	Vent	10861-572	200
250	175	Plug Seal	10861-574	100
250	175	Vent	10861-576	100
600	400	Plug Seal	10861-578	40
600	400	Vent	10861-580	40
850	800	Plug Seal	10861-582	18
850	800	Vent	10861-584	18





## VWR® Roller Bottles

These clear polystyrene, non-pyrogenic bottles have a silk-printed graduated scale and include high-density polyethylene caps.

They are manufactured in a class 100,000 cleanroom environment under EN ISO13485:2003 and ISO9001:2008 quality management system. Each package case has a labeled lot number.

Temperature Range: -20°C to +50°C

- Sterilized by gamma irradiation; SAL 10<sup>-6</sup> (ISO11137)
- Shelf life: 3 years after month of production
- Non-autoclavable

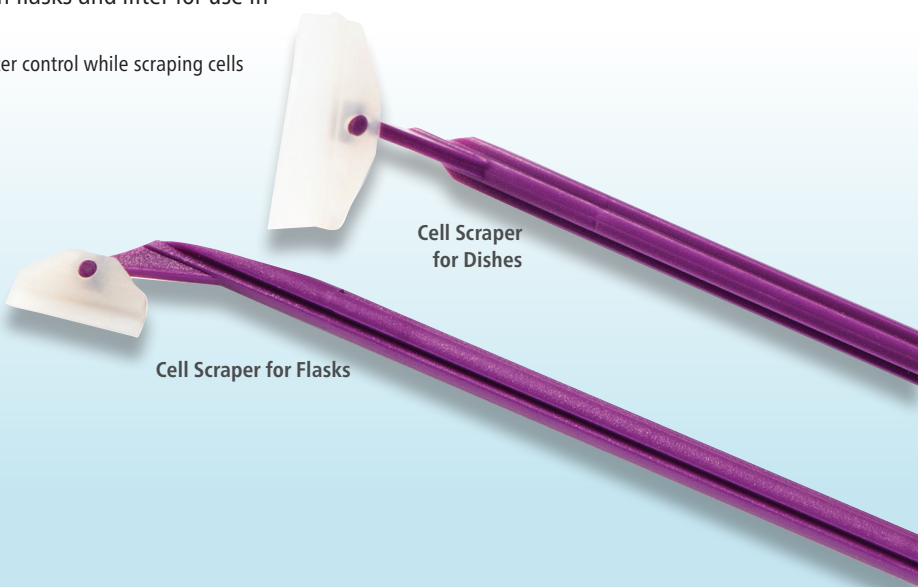
Capacity, mL	Cell Growth Area, cm <sup>2</sup>	Cap Style	Cat No.	Bottle/Bag	Bottles/Case
1000 mL	490	Plug Seal	<b>10769-794</b>	2	40
2000 mL	850	Plug Seal	<b>10769-800</b>	2	40
2000 mL	850	Plug Seal	<b>10769-798</b>	5	40
2000 mL	850	Plug Seal	<b>10769-796</b>	20	20
2000 mL	1900	Vented*	<b>10769-802</b>	5	40

\*0.22µm Hydrophobic Membrane for use with vented cap only

## VWR® Cell Scrapers

Specially developed to make the process of scraping off and collecting cells easier and more effective. Available with two blade positions: scraper for use in flasks and lifter for use in harvesting cells (specifically stem cells) in dishes.

- Cross-ribbed handle in ABS provides a greater rigidity and ensures a better control while scraping cells
- Thin, flexible blade in TPE prevents damaging cells
- Individually wrapped
- Sterilized by gamma irradiation
- Non-pyrogenic



Description	Blade Position	Length, cm (in.)	Blade Width, mm	Cat. No.	Case of
Cell Scraper for Dishes	Lifter	25 (9 <sup>7</sup> / <sub>8</sub> )	20	<b>10062-906</b>	100
Cell Scraper for Dishes	Lifter	39 (15 <sup>3</sup> / <sub>8</sub> )	30	<b>10062-910</b>	100
Cell Scraper for Flasks	Scraper	25 (9 <sup>7</sup> / <sub>8</sub> )	20	<b>10062-904</b>	100
Cell Scraper for Flasks	Scraper	39 (15 <sup>3</sup> / <sub>8</sub> )	30	<b>10062-908</b>	100



### VWR® Storage/Media Bottles

VWR® Storage/Media Bottles are designed with a wide opening (30mm I.D.) and a drip-free polypropylene pour ring. They feature enhanced graduations and marking spots printed in permanent white enamel. Bottles are manufactured from borosilicate glass and can be autoclaved to 180°C (356°F). Bottles come with standard GL45 polypropylene caps.

- Wide mouth opening with drip-free pour ring
- Borosilicate glass construction
- Enhanced graduations
- Autoclavable

Capacity	Graduation Interval, mL	Graduation Range, mL	Cat. No.	Case of
100 mL (3.4 oz.)	10	20–80	10754-814	10
250 mL (8.4 oz.)	25	50–200	10754-816	10
500 mL (16.9 oz.)	50	100–400	10754-818	10
1 L (33.8 oz.)	50	100–900	10754-820	10
2 L (67.6 oz.)	100	400–1800	10754-822	10
5 L (1.3 gal.)	250	1000–4500	10754-824	1
10 L (2.6 gal.)	500	2000–9000	10754-826	1



### VWR® Inverted Microscopes

The VWR Inverted Microscope is the ideal device for live cell and advanced applications. The VWR Inverted Fluorescence Microscope is ideal for applications in biology, cell cytology, genetics, oncology, and immunology. Both are also well suited for research, universities, routine laboratory, and medical demands.

- Trinocular Siedentopf tube with 45° inclination
- One-year warranty on electrical parts
- Five-year warranty on mechanical parts and optics

Description	Cat. No.	Unit
VWR Inverted Microscope	89404-462	Each
VWR Inverted Fluorescence Microscope	89404-464	Each



### VWR® General-Purpose Water Baths

Versatile general-purpose water bath with digital display, programmable timer, programmable high limit, programmable calibration/temperature offset, three programmable preset temperatures, and audible alarm standard.

- VWR two-year warranty
- Comes with a high clearance lid
- Three user configured temperature presets
- Built-in countdown timer

Capacity	Overall Dimensions	Working Dimensions	Cat. No.	Unit
5 L	36.8L x 30.5W x 34.3H cm (14.5 x 12 x 13.5")	12.7L x 27.4W x 14.0D cm (5 x 10.8 x 5.5")	89501-464	Each



### VWR® General Purpose Centrifuge Cell Culture Package

- Robust & steady, temperature control system; refrigerated unit features a pre-cool function from -20 to +40 °C
- Quiet operation (as quiet as normal conversation)
- FDA registered centrifuge manufacturer
- Speed: 45,000 rpm
- RCF: 3,260 g
- Five-year warranty

Centrifuge package includes: centrifuge, horizontal rotor, four buckets, and eight 15mL adapters. Rotor package includes: swing-out rotor, four buckets, and eight adapters and inserts for 15/50mL conical tubes

Description	Cat. No.
General Purpose Centrifuge Package, Ambient	10830-762
General Purpose Centrifuge Package, Refrigerated	10830-764
Cell Culture Rotor Package	10830-778

### VWR® Advanced 3500 Orbital Shaker and Dura-Shaker

The VWR® Advanced 3500 Orbital Shakers and Dura-Shakers are designed for a wide range of applications including cell cultures that require CO<sub>2</sub> and humidity for optimal cell growth. The Dura-Shaker is designed to withstand 100% humidity. The microprocessor control provides consistent uniform shaking while safely ramping to the set speed. Distinctive operational features include the exclusive Accu-Drive Shaking System, which delivers exceptional speed control, accuracy, and durability. The system continuously monitors shaking speed and maintains set-point, even under changing loads.

- Dura-shaker's remote controller magnetically attaches to most incubators
- Exclusive Accu-Drive® shaking system
- Five-year warranty on parts and labor



Description	Dimensions	Orbit Size, mm (in.)	Speed Range, rpm	Cat. No.	Unit
Model 3500 Advanced Shaker	41.3L x 35.6W x 14.6H cm (16 1/4 x 14 x 5 3/4"), overall	19 (3/4")	15-500	89032-096	Each
Dura-Shaker	30.1L x 35.6W x 15.4H cm (11 7/8 x 14 x 6 1/8") Shaker; 13.5L x 35.6W x 11.6H cm (5 5/16 x 14 x 4 5/8") Remote (overall)	19 (3/4")	15-500	10159-960	Each

## All You Need for Life Science

At VWR, we enable Life Science throughout the world by providing the power of choice with over 5 million products for our customers. You will find new tools and products in the All You Need areas for the workflows of Cell Biology, Genomics, Proteomics, and Microbiology.



## VWR® Air Jacketed CO<sub>2</sub> Incubators

- 6.5 cu. ft. internal volume
- Removable water pan and four shelves included
- In-chamber HEPA filtration airflow designed to protect samples from airborne contaminants during routine access
- Overnight 140°C sterilization cycle for easy cleaning and reliable decontamination
- In-chamber probes and sensors for precise control
- Choice of long lasting TC or independent IR CO<sub>2</sub> sensor
- Easy assembly and disassembly of interior without tools
- Dual stack configurations include mobile support stand and stacking kit to maximize lab space
- Three-year part and labor warranty



Description	Cat. No.
TC Sensor	10810-902
IR Sensor	10810-944
Dual TC Sensor	10811-002
Dual IR Sensor	10811-004



## VWR® Manual Defrost Laboratory Freezer

The VWR Series Manual Defrost Laboratory Freezer is purpose built for critical cold storage applications, but where built-in data logging functionality may not be a necessity. The all-new temperature display and alarm module offers an array of robust security features with a monitoring and alarm.

Electrical	Capacity	Exterior Dimensions	No. of Shelves	Cat. No.
115V, 60Hz, 5A	566 L (20 cu. ft.)	34W x 32 <sup>3</sup> / <sub>4</sub> D x 73 <sup>1</sup> / <sub>4</sub> H"	4	10819-388

## VWR® Ultra-Low Temperature Upright Freezer

VWR® Ultra-Low Temperature Upright Freezers are designed and constructed for long-term performance, and they represent the leading choice of laboratory professionals for applications where temperature control is critical.

- Microprocessor temperature control system
- Advanced monitor/alarm system
- Automatic voltage compensator
- Cascade refrigeration system
- Non-CFC, Non-HFCF, nonflammable refrigerants

Electrical	Capacity	Exterior Dimensions	Temperature Range	Amps/ Breaker	Cat. No.	Unit
120V, 60Hz	651 L (23 cu. ft.)	104W x 198H x 94D cm (41 x 78 x 37")	-86 to -50°C (-123 to -58°F)	16/20	10160-732	Each



## Product Differentiation Table

		FBS Products		
		Ultimate Grade FBS	Premium Grade FBS	Ultra Low IgG FBS
Country of Origin	100% US Origin	X	X	X
Product Features	Single-Use Filtration Technology	X	X	X
	Cold Chain Manufactured	X	X	
	Class 100 Cleanroom Manufactured	X	X	
	Triple 0.1µm Sterile Filtered	X	X	X
	Homogenous Lots	X	X	X
	Independently Tested by Third-Party Laboratories	X	X	X
Specifications	ISIA <sup>†</sup> Certified Traceability	X	X	X
	Endotoxin	≤ 10	≤ 20	≤ 20
	Hemoglobin	≤ 25	≤ 25	≤ 25
	9CFR Virus Testing, Sterility, Mycoplasma	X	X	X
	Biochemical Assay	X	X	X
	Electrophoretic Profile	X	X	X
	Additional Virus Testing by qPCR Technology	X		
	Single-Sourced from 1 USDA Approved Facility	X		
	Certified US Originating Animals Only	X		
Enhanced Traceability & Regulatory Compliance	X			

<sup>†</sup>International Serum Industry Association (serumindustry.org)

The care and attention devoted to the manufacture of VWR Life Science Seradigm serum products generates final test results that are substantially lower than set specifications. See lot-specific Certificates of Analysis for actual test results.

## Universal Features

- Performance & Quality Unlike Any Other
- Options for Every Application & Budget
- ISIA Certified Traceability



## Ultimate Grade FBS

The ultimate in product quality and viral safety, this grade undergoes additional BVD virus testing using qPCR technology. Proprietary collection and production techniques provide additional features that elevate product quality, enhance traceability, and improve regulatory compliance.

Used by cell culturists who work with primary or sensitive cells, work in production environments, have regulatory or traceability concerns, or have strict evaluation criteria. Ultimate grade is 100% US origin.

## Premium Grade FBS

Offers unique quality features like complete testing by independent, third-party laboratories and ISIA-certified raw material traceability that elevate it above comparable products from other serum suppliers.

Universally used by cell culturists who require a high quality, high performance product for a wide variety of applications. Premium grade is 100% US origin.

## Ultra Low IgG FBS

Ultra Low IgG FBS is purified of immunoglobulin (IgG) using a chromatographic process that delivers significantly reduced levels of IgG (≤5µg/mL). Ideal for cell culture and protein purification applications where naturally occurring levels of IgG are too high. Ultra Low IgG FBS is 100% US origin.

Ultimate Grade			Premium Grade FBS			Ultra Low IgG FBS		
Size	Additional Treatment	Cat. No.	Size	Additional Treatment	Cat. No.	Size	Additional Treatment	Cat. No.
50mL	None	89510-198	50mL	None	89510-194	50mL	None	10018-828
50mL	Heat Inactivated	89510-200	50mL	Heat Inactivated	89510-196	50mL	Heat Inactivated	10018-832
500mL	None	97068-101	500mL	None	97068-085	500mL	None	10018-826
500mL	Heat Inactivated	97068-107	500mL	Heat Inactivated	97068-091	500mL	Heat Inactivated	10018-830

Gamma irradiation available upon request.



1.800.932.5000 | vwr.com



Prices and product details are current when published; subject to change without notice. [Certain products may be limited by federal, state, provincial, or local regulations. [VWR makes no claims or warranties concerning sustainable/green products. Any claims concerning sustainable/green products are the sole claims of the manufacturer and not those of VWR International, LLC. All prices are in US dollars unless otherwise noted. Offers valid in US and Canada, void where prohibited by law or company policy, while supplies last. [VWR, the VWR logo and variations on the foregoing are registered (®) or unregistered trademarks and service marks, of VWR International, LLC and its related companies. All other marks referenced are registered by their respective owner(s). [Visit vwr.com to view our privacy policy, trademark owners and additional disclaimers. ©2017 VWR International, LLC. All rights reserved.